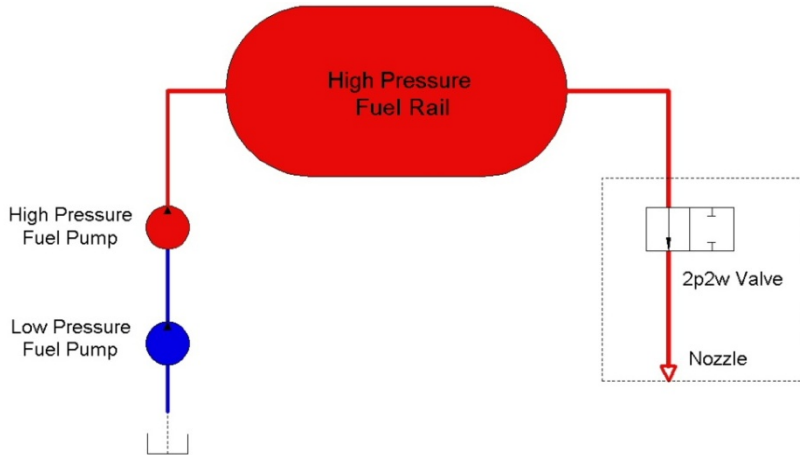


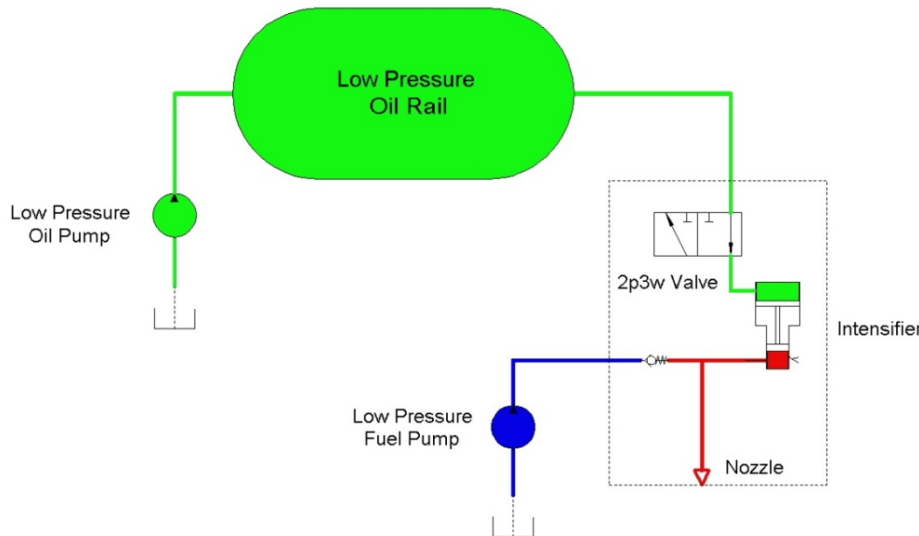


# Beyond Common Rail and Hydraulic Intensification

## Common Rail System



## Environmental Injector System



- **Move the fuel accumulator volume from the fuel rail to the injector nozzle. Maintain desired pressure throughout multiple injection events.**
- **Allow higher injection pressure by reducing pressure spikes at nozzle.**
- **Significantly reduce parasitic losses associated with venting by locating all high pressure fuel within the injector.**
- **Allow a wide range of alternative fuels via elimination of fuel as the working fluid within the injector. The Intensifier and Control valves operate in hydraulic fluid.**
- **Reduce cost and improve safety. Eliminate the high pressure pump and high pressure fuel lines under hood.**
- **Utilize hydraulic rail for multiple applications: hybridization, injectors, ride control, accessory drives, engine valves...**



DH-1

# Digital Hydraulic Injector



PROPRIETARY & CONFIDENTIAL  
Property of Sturman Industries, Inc., its subsidiaries, and/or affiliates.  
All Rights Reserved.